

Open Die (Press) Forged Steel Forgings

- **Workmanship:**

open die rough (black, free issue) forgings

semi (rough) machined forgings with material allowance for final machining which can be adjusted as per customers requirements, surface roughness Ra=6,5

rough machined and flame-cut forgings with allowance 5mm/ surface or as per customer requirement

- **Commonly used material types:**

EN Norms:

steel per EN 10083 - 1,2
C- Mn steels per EN 10025+A1
alloyed steels for refinement per EN 10083-1,3
alloyed steels for cementation per EN 10084
alloyed steels for nitridation per EN 10085
stainless steels per EN 10088-1,3

and ASTM and GOST norms or their deviations as per customer requirements.

- **Commonly applied heat treatment:**

soft annealing
normalization (also with tempering)
quenching (oil/water) (max. length 2800 mm) (also with tempering)
solution annealing
stress relieving annealing

- **Commonly applied testing:**

Brinell hardness testing
Testing of mechanical properties by low and high temperatures
metallography
defectoscopy
visual testing, dimensional testing
UT testing per EN 10228-3 (up to level 4)
MT testing per EN 10228-1 (up to level 4)



CZECH PRECISION FORGE

Registered Address:
CZECH PRECISION FORGE a.s.
Husova 242/9, 110 00 Praha 1

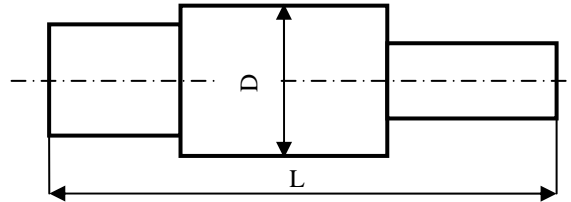
Main Facility:
CZECH PRECISION FORGE a.s.
Tylova 57, 316 00 Plzeň



Longitudinal Forgings

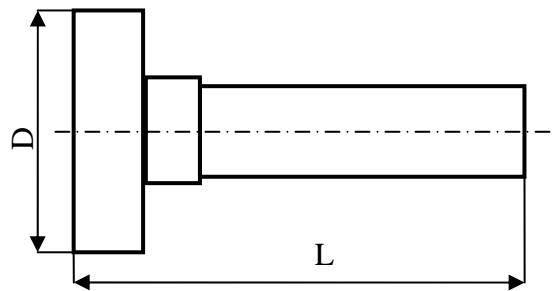
(bars, stepped shafts, throughput shafts, combined shafts...)

*Max. D: 540mm
Max. L: 3500mm
Max. H of flame-cuts 300mm
Max. weight: 2800kg*



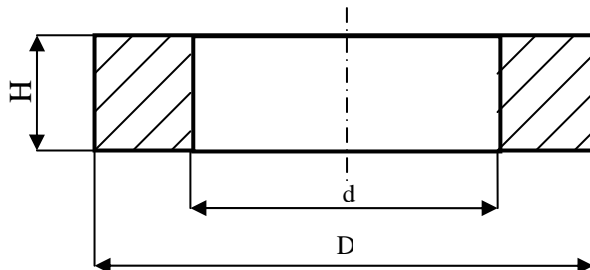
Flange Shafts

*Max. D: 1300mm
Max. L: 1700mm
Max. weight: 2800kg*



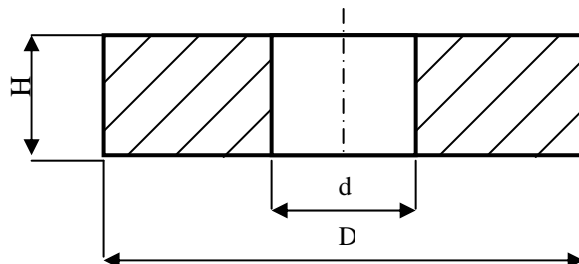
Rings

*Max. D: 1500mm
Max. d: 1350mm
Max. H: 500mm
Max. weight: 2500kg
Min. D: 350mm
Min. d: 250mm
Min. H: 100mm
Min. weight: 40kg*



Discs

*Max. D: 1300mm
Max. H: 500mm
Max. weight: 2500kg
Min. D: 300mm
Min. H: 100mm
Min. weight: 60kg
Punching Range d: 80mm - 250mm (or without punching)*

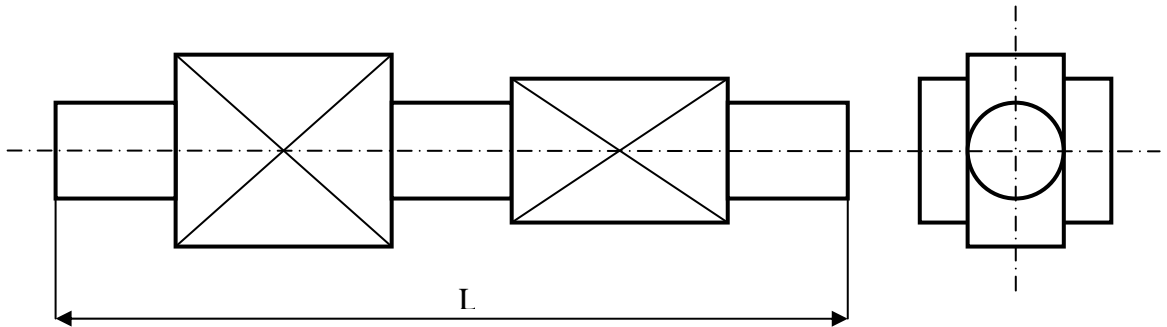


Crankshafts

(1 x cranked, 2 x cranked, 3 x cranked)

Max. L: 3500mm

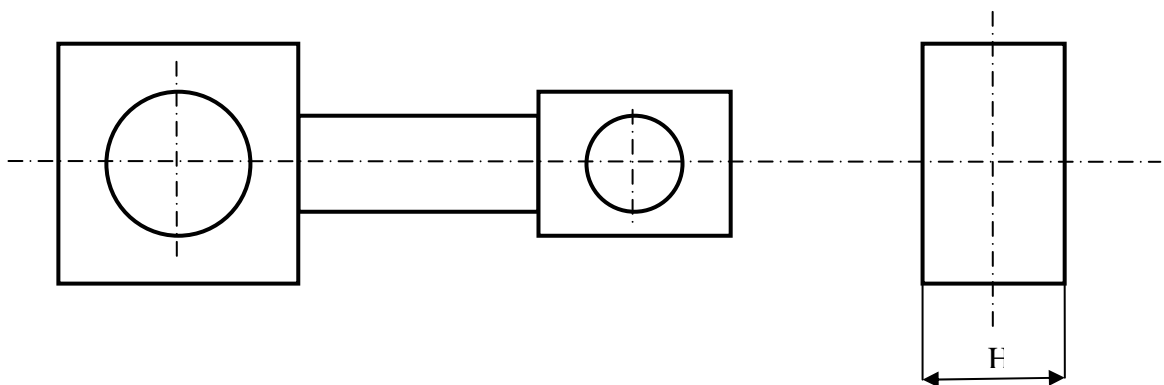
Max. weight: 2800kg



Flame-cut Connecting Rods

Max. H: 300mm

Max. weight: 2800kg





Registered Address:
CZECH PRECISION FORGE a.s.
Husova 242/9, 110 00 Praha 1

Main Facility:
CZECH PRECISION FORGE a.s.
Tylova 57, 316 00 Plzeň

